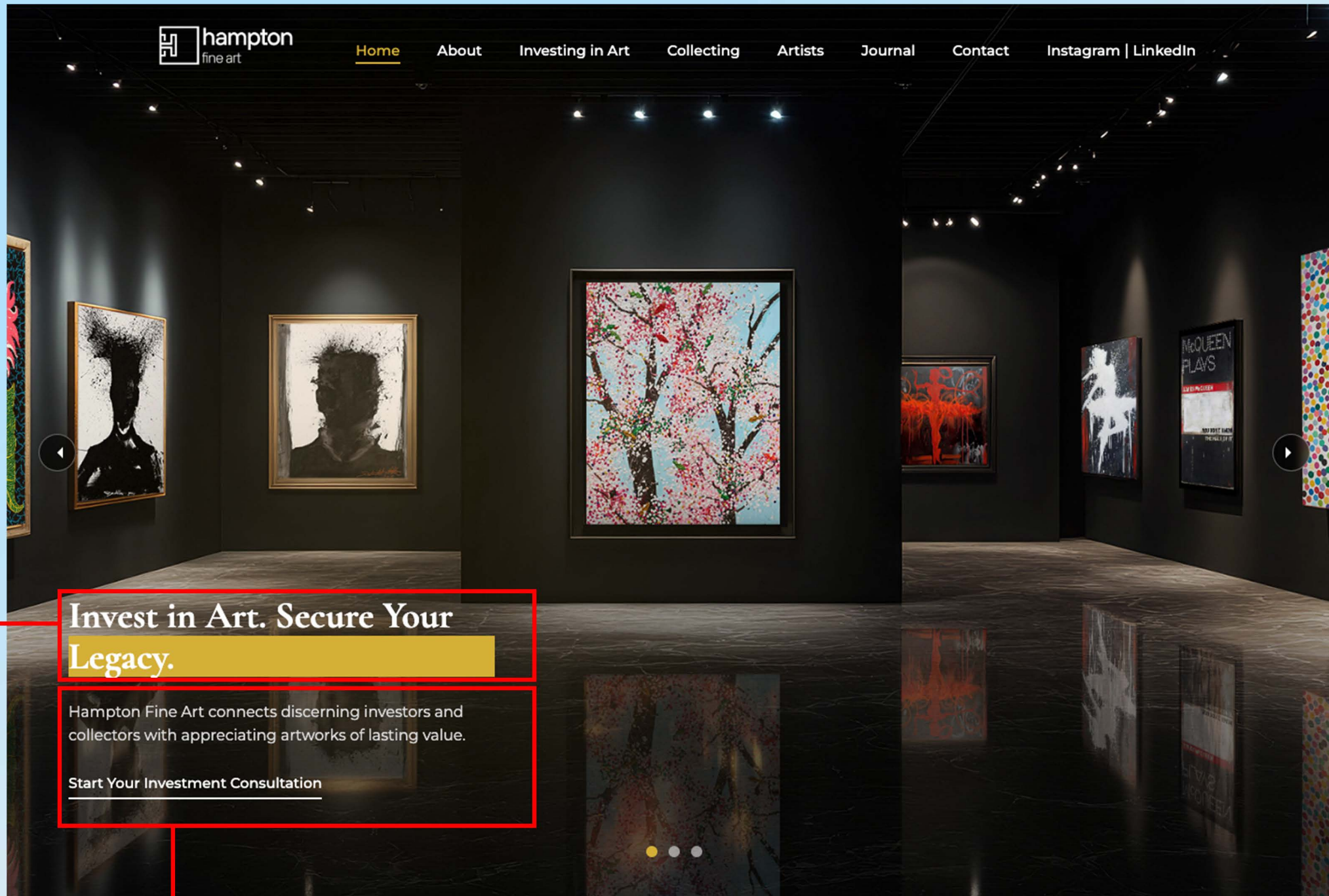




CryptoCanvas
X
Hampton Fine Art
REVIEW



@JaySmithhCrypto



Change this heading font into "TT Hoves Pro Trial Medium" or "Montserrat Bold or SemiBold" so it matches the brand's identity. And it needs to be aligned center.

This current image needs to be moved to the last image to avoid any potential disputes with the original website's owner. Will send the references for the new image.

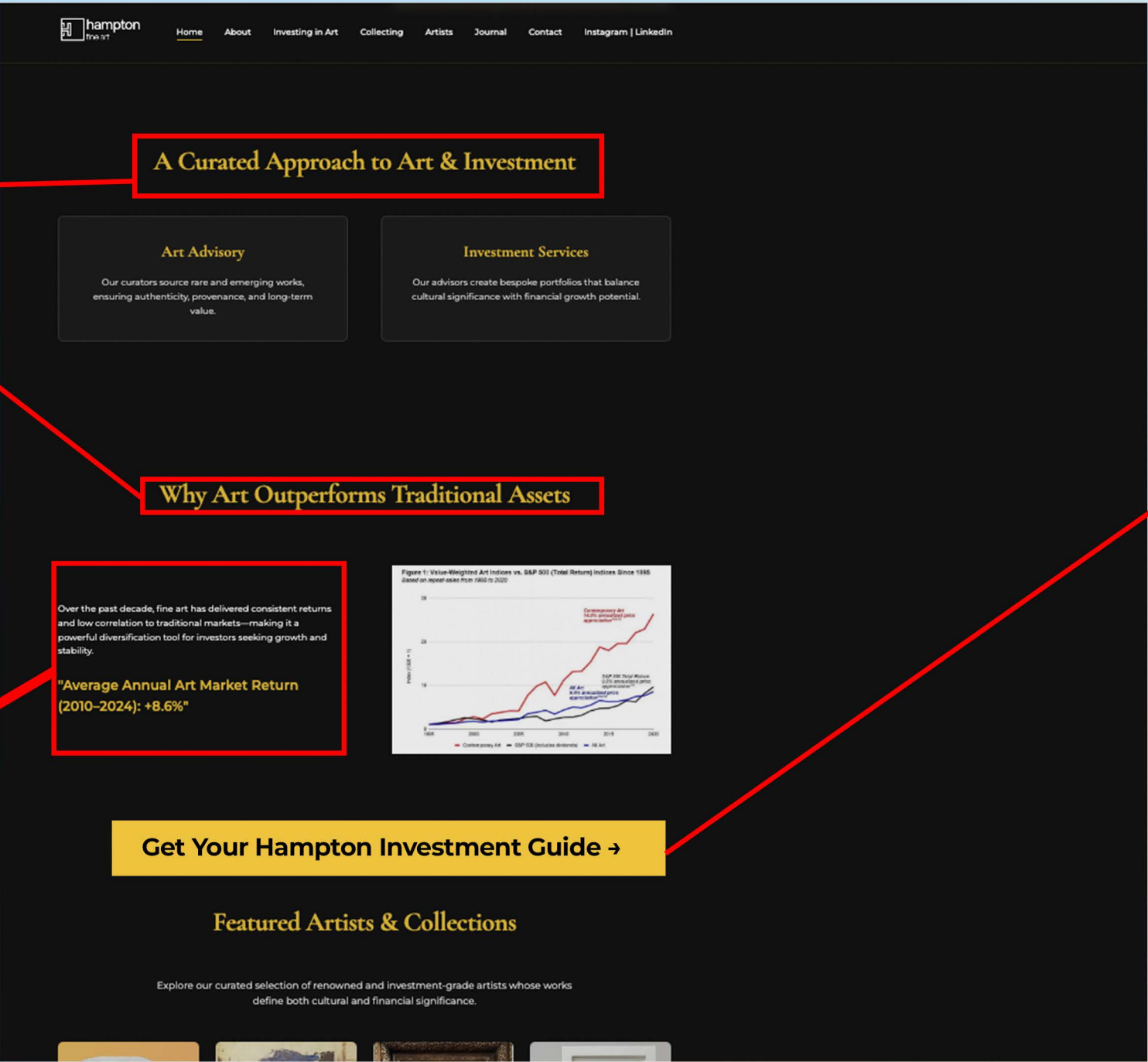
Would be ideal if we could realign this text into the middle.

Change every heading font into "TT Hoves Pro Trial Medium" or "Montserrat Bold or SemiBold" so it matches the brand's identity.

Add this paragraph after stability...

To help you explore the opportunities within the global art market, we've created the Hampton Fine Art Investment Guide — a comprehensive overview of how art performs as an asset class, key market insights, and strategies to build a resilient, appreciating portfolio.

Request your copy below and discover how fine art can strengthen and diversify your investment strategy.



Add a couple more sections onto the website.

after "Why Art Outperforms Traditional Assets" section,

Create an investment section with a CTA button that states "Get Your Hampton Investment Guide", and then direct them to a form on the website where they can download the investment guide. But before they download it, they'll have to fill in details then the PDF guide will be emailed to them automatically.

This will save anyone like downloading it for free and taking our ideas if that makes sense.

Once this is fully launched, the terms of service and the privacy policies will be provided. The Instagram and the LinkedIn account will be added too but unsure on the ETA but most likely end of the month or next month.

Change this heading font into "TT Hoves Pro Trial Medium" or "Montserrat Bold or SemiBold" so it matches the brand's identity.

The screenshot shows the Hampton Fine Art website's contact page. The header includes the logo and navigation links: Home, About, Investing in Art, Collecting, Artists, Journal, Contact, and Instagram | LinkedIn. The main heading is "Begin Your Art Investment Journey" in a yellow serif font. Below it is a subheading: "Every great collection begins with a conversation. Speak with one of our investment specialists to explore how fine art can enhance your portfolio." The "Get in Touch" section contains a contact form with fields for Full Name, Email Address, Investment Budget (with a placeholder "e.g., £100,000"), and a Message field. To the right of the form are contact details: email (zozolated@gmail.com), phone (+44 (0)XXX XXX XXXX), and location (London, UK). A "Send Enquiry" button is at the bottom of the form. A browser window overlay shows the URL "sleakk.com/hampton/contact.html" and a red box around the globe icon in the address bar.

change the email to XXXXXX + phone number to XXXXXXXX

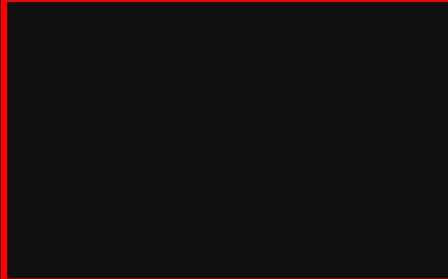
On this Contact form page, put e.g. £10,000 instead of £100,000

Add the icon mark for this. Use the reference below.



Featured Artists & Collections

Explore our curated selection of renowned and investment-grade artists whose works define both cultural and financial significance.



[View All Artists](#) →

Add two more images, pick any artists work to ensure it looks smoothly and asymmetrical - two rows of 4 images.

Client Experiences

*"Hampton Fine Art provided clarity, professionalism, and measurable results
—my portfolio appreciated over 20% within two years."*

— A. Thompson, London

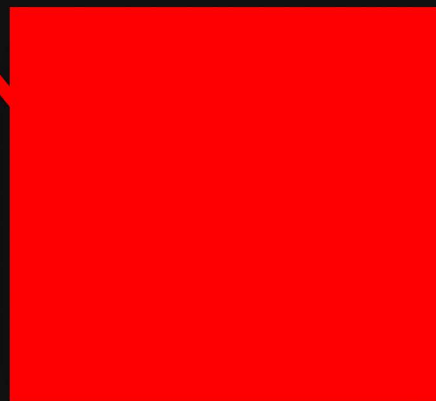
Our Philosophy

Hampton Fine Art was founded on the belief that collecting fine art should be both emotionally fulfilling and financially rewarding. Our advisors combine **deep market knowledge, auction experience, and strong industry connections** to guide clients through every stage of the investment process.

We believe that exceptional art transcends time. Whether you're a seasoned collector or beginning your investment journey, our team is committed to helping you build a portfolio that reflects your vision and delivers measurable returns.



Our Experts



James Mitchell

ART INVESTMENT DIRECTOR

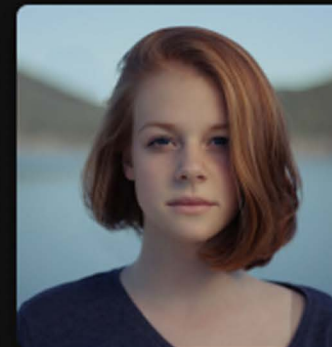
20+ years of experience in fine art markets and investment strategy across global auction houses.



Elena Rodriguez

SENIOR CURATOR

Expert in contemporary and modern art authentication, provenance research, and collection development.



David Chen

CLIENT RELATIONS MANAGER

Dedicated to understanding client goals and delivering personalized art investment solutions and support.

Our Philosophy section should look similar to the new "Proven Results" section with an identical layout.

The graphic visual can show years of experience or numbers of artworks sold or average ROI.

Replace Our Experts to "Proven Results"

Remove this Experts section and add this paragraph.

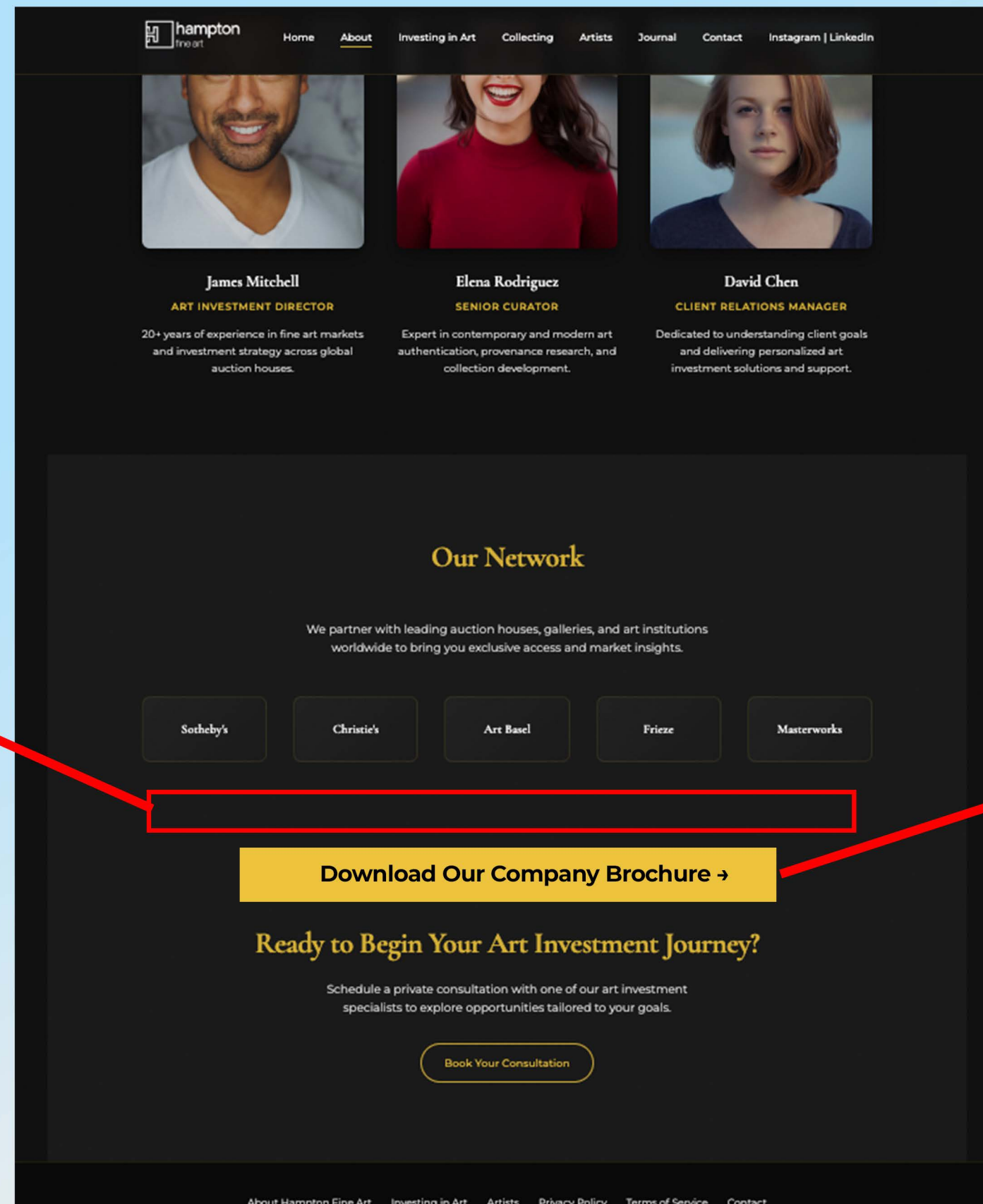
Over the past decade, Hampton Fine Art has built a track record of success in sourcing, acquiring, and selling blue-chip artworks across both private and public markets.

Our portfolio includes transactions involving artists such as **Banksy, Damien Hirst, Pablo Picasso, and Andy Warhol** - each reflecting our deep understanding of value appreciation and timing within the art market.

By combining data-driven insights with decades of collective experience, we've helped our clients realise strong returns, consistent growth, and successful exits across diverse art segments.

Whether facilitating acquisitions through major auction houses or securing off-market opportunities, our history demonstrates a clear focus: achieving measurable financial performance through art.





Add new section after Our Network -

Company Brochure as a subheading text

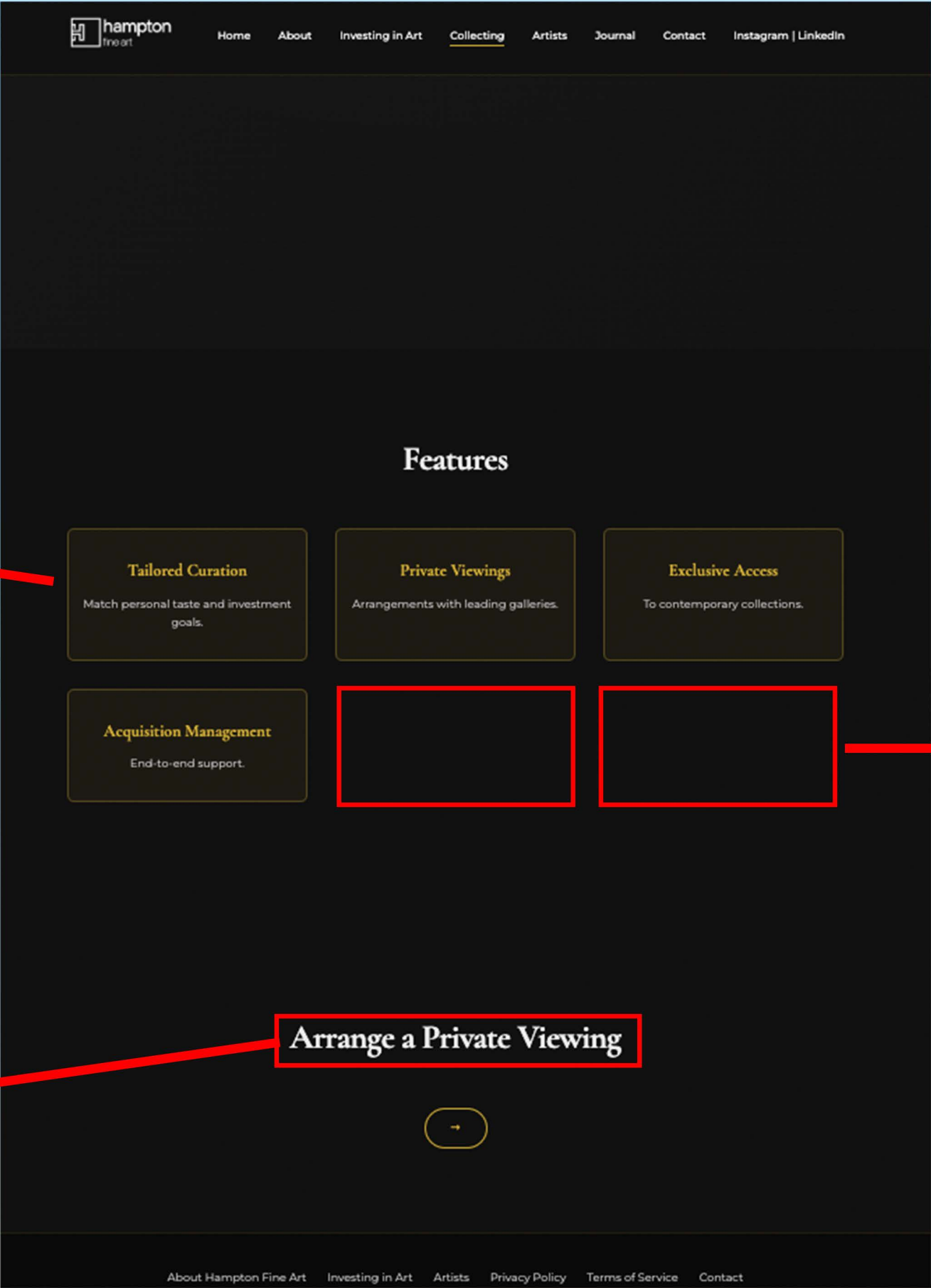
"Learn more about our investment process, portfolio approach, and the artists we represent."

"Our company brochure provides an in-depth overview of how Hampton Fine Art combines aesthetic excellence with financial expertise to deliver lasting value."

Then it should have a CTA button directing them to a PDF for them to download. This will be a different CTA method to the "Get Your Hampton Investment Guide" as that one requires submitting details on a form but for a brochure, it is for public use + download.

CTA Button as how it should look like.

Please remember to update every subheading font into Montserrat Bold or TT Hoves Pro Trial Bold.



Update these boxes to accordingly below.

Tailored Curation box
Match your personal taste and investment goals through curated artwork selections designed exclusively for you.

Private Viewings box
Discreet, by-appointment access to rare pieces through our global gallery network.

Exclusive Access box
Gain entry to top-tier contemporary collections and international art fairs.

Acquisition Management
From negotiation to delivery, we handle every stage of the purchase with precision and discretion.

Arrange a Private Viewing needs to be changed into

“Arrange a Private Consultation”

Do not change the direct button link.

Add the two boxes

Global Delivery & Installation
Secure, insured worldwide delivery - coordinated with professional art handlers to ensure your pieces arrive in pristine condition.

Authentication & Provenance
Every work is accompanied by verified documentation and expert authentication for complete confidence in your investment.

Update the heading fonts to the Montserrat / TT Hoves Trial Pro.

Please ensure that this looks aesthetically pleasing and looks assymetrical in the website / mobile version.

Website - two rows of 3 boxes.
Mobile - 3 rows of 2 boxes.

